



# Simmer's Sky

## Japanese Airports vol.2 (update)

Thank you for downloading the update program for “Japanese Airports vol.2”.  
In this document we will describe the installation procedure for this update.

### Reminders for the update file

In this update file, both previously known bugfixes and additional data are included.

- Taxi way lights' brightness has been increased, in all 6 airports.
- Airport ground vehicles and 3D general vehicles have been added to all 6 airports.
- Aomori Airport's runway has been extended to 3000 meters. Also, approaching lights has been changed to CATIII operation.
- A four level parking lot has been added to Aomori Airport.
- Aomori Airport's boarding bridge (GATE3) had its walls changed to glass.
- Akita Airport's boarding bridge was changed to full window pane wall.
- Support for Airport Enhancement Services (AES) software (Only on FS2004).

### Read before Installing

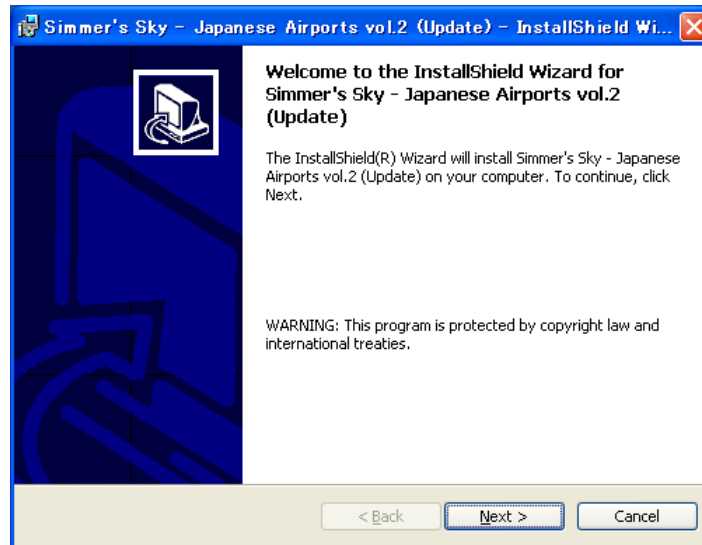
To use this update, following software programs are required:

- **Microsoft Flight Simulator 2004** (“FS9”) or **Flight Simulator 2002** (“FS8”)
  - **Simmer's Sky - Japanese Airports vol.2**
- Japanese Airports vol.2 should be installed prior to this update.  
- To install this update, Password (Register Code) is necessary.  
- If you have already registered to the scenery library and registering facility data (AFCAD) files, you need to do “Deletion of a scenery library” and “Restoration of AFCAD” before the installation.

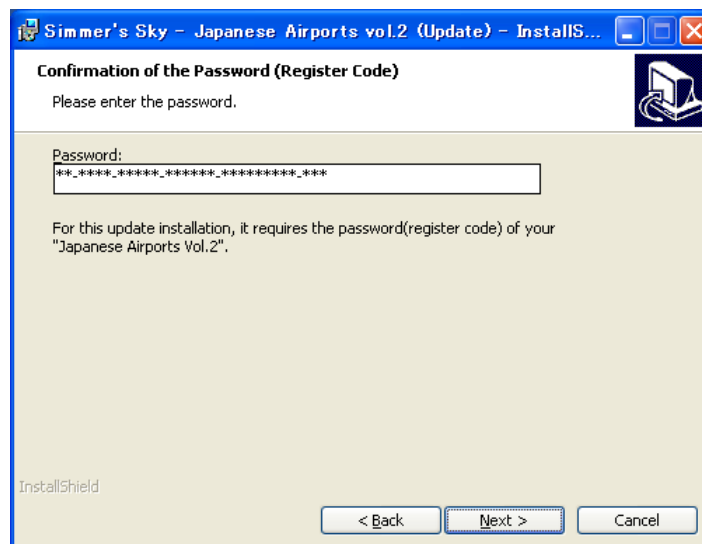
## Installing the update

Follow the instructions below:

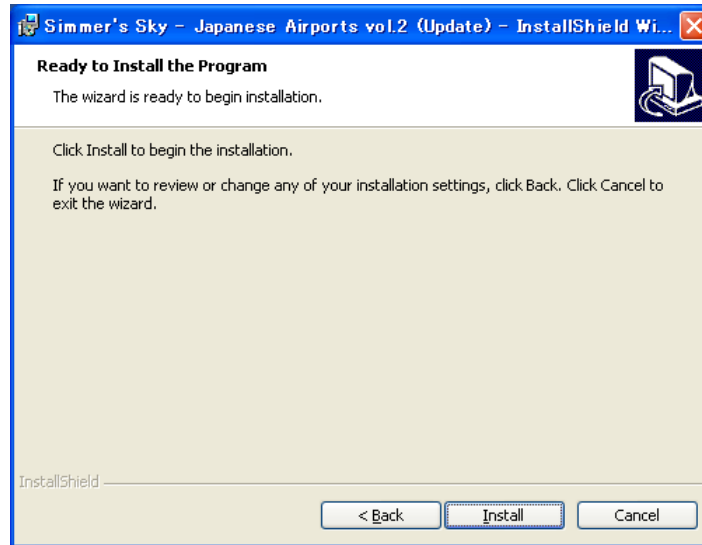
1. Execute the update file by double clicking the downloaded program (ja2\_update.exe). Within a while, Install Shield Wizard will start installation procedure. When it is done, you will see a window shown below. Click [Next] to proceed.



2. First you will be asked to fill in the Password (Register Code) of your Japanese Airports vol.2. Enter the password, then click [Next].

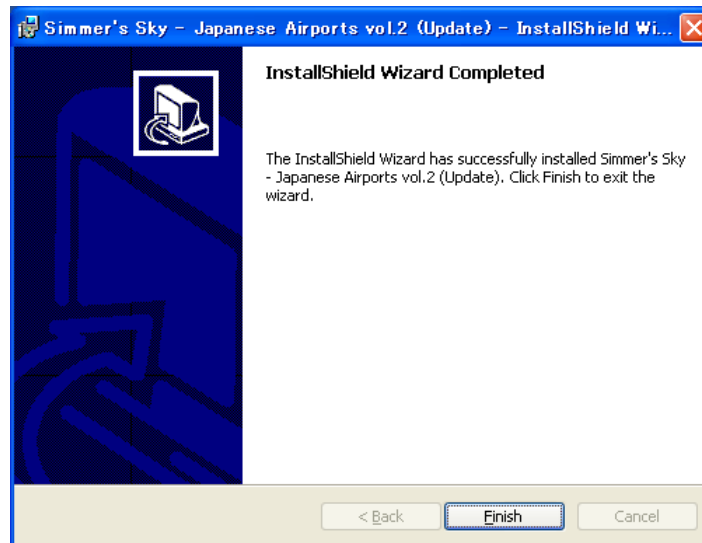


3. When a window below appears, click [Install].



4. The installation will take a while. Wait until it finishes.

5. If it is done, you will see a window below. Click [Finish], now the installation is complete.





6. When the update is successfully installed, launch "Setup Tool" and define the preferences.

**< The usage of the "Setup Tool" >**

There are 2 types of "Setup Tool" included; for 2004 and for 2002.

You can register or delete scenery files, and also register or restore AFCAD files.

"Setup Tool" can be launched from Start menu;

(Start - Programs - Simmer's Sky - Japanese Airports – JA2 Setup Tool)

■ Registering the scenery library (FS2004/FS2002):

1. Click "Register the scenery library" button.
2. When the check screen is displayed, click "yes" button.
3. Click "OK" button and Registration of scenery library is complete.

■ Registering the AFCAD file (FS2002):

1. Click "Register the AFCAD file" button.
2. On the airport selection screen, choose the desired airport and click "OK" button.
3. Please follow directions of a screen.



## **Uninstalling Japanese Airports**

To uninstall Japanese Airports vol.2, first you need to uninstall the update programs described below before uninstalling the program.

- Simmer's Sky - Japanese Airports vol.2 (update) - uninstall first
- Simmer's Sky - Japanese Airports vol.2

1. Go to the Windows Start Menu. Open [Settings] - [Control Panel]. Double-Click on [Add/Remove Programs].

- If your Windows XP uses Luna as a desktop theme, [Start] - [Control Panel] - [Add/Remove Programs].

2. Select "Simmer's Sky – Japanese Airports vol.2 (update)" from the list and click [Remove] button.

If you are using Windows 98/Me, click [Add/Remove] button.

3. Then a confirmation dialogue will appear, click [OK] then the update program will be removed from your PC.

4. When it is complete, uninstall "Simmers's Sky - Japanese Airports vol.2" by following the procedure above.

Please note: Do not remove the software without using [Add/Remove Programs]!  
The uninstall will result in mal function!

**Last update: December 22, 2008**