



Simmer's Sky

Japanese Airports vol.4 (update)

Thank you for downloading the update program for “Japanese Airports vol.4”.
In this document we will describe the installation procedure for this update.

About this service data

This update includes bug fixes and service data. By adding this data, we assure your prosperous flight experience.

■ Taxi way lights' brightness has been increased, in all 5 airports.

Note: Optional for Haneda and Fukuoka, since its frame rate would decrease (installation can be selected).

■ Airport ground vehicles and 3D general vehicles have been added to all 5 airports.

Note: 3d general vehicles are optional for both Haneda and Fukuoka, since its frame rate would decrease accordingly (installation can be selected).

■ Haneda and Fukuoka airports have been refurbished.

■ Support for Airport Enhancement Services (AES) software (Only on FS2004).

※ Since our first release, consumer computer hardware has developed dramatically, hence we decided to include 3d ground vehicles which needs to raise the minimum requirements for this software. If your hardware does not satisfy these requirements, note that its frame rate may decrease.

Read before Installing

To use this update, following software programs are required:

■ **Microsoft Flight Simulator 2004** (“FS9”) or **Flight Simulator 2002** (“FS8”)

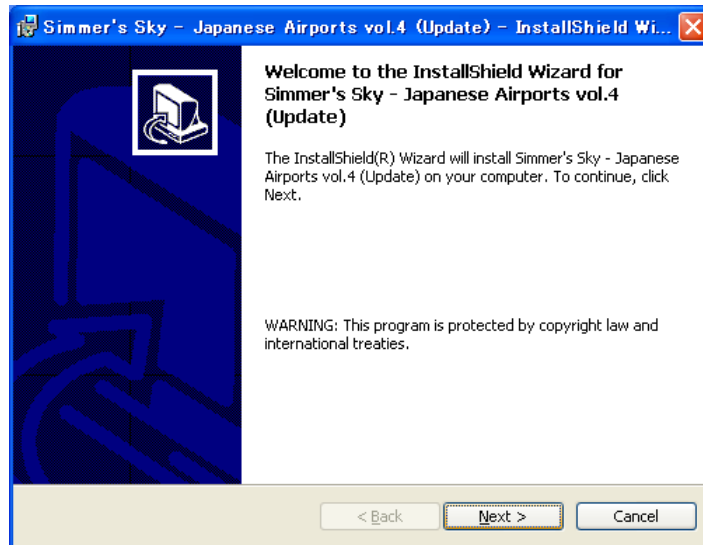
■ **Simmer's Sky - Japanese Airports vol.4**

- Japanese Airports vol.4 should be installed prior to this update.
- To install this update, Password (Register Code) is necessary.
- If you have already registered to the scenery library and registering facility data (AFCAD) files, you need to do “Deletion of a scenery library” and “Restoration of AFCAD” before the installation.

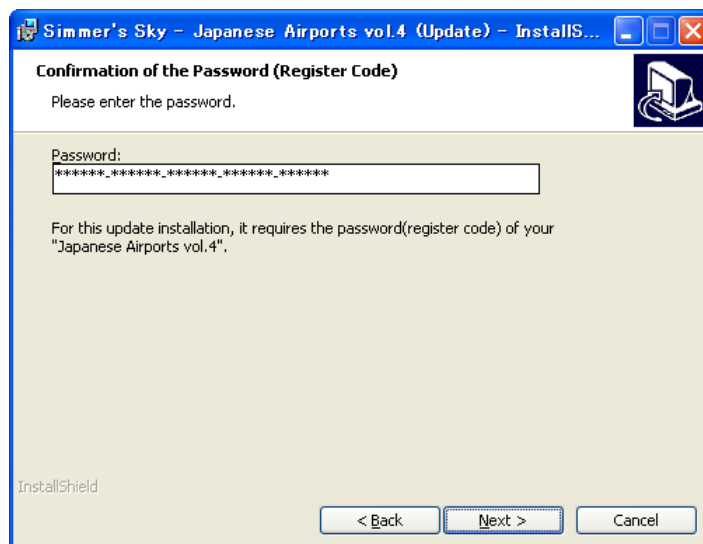
Installing the update

Follow the instructions below:

1. Execute the update file by double clicking the downloaded program (ja4_update.exe). Within a while, Install Shield Wizard will start installation procedure. When it is done, you will see a window shown below. Click [Next] to proceed.

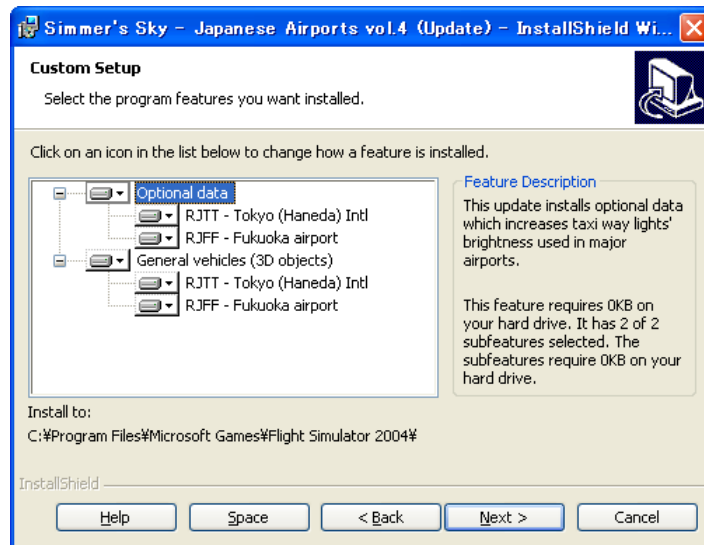


2. First you will be asked to fill in the Password (Register Code) of your Japanese Airports vol.4. Enter the password, then click [Next].





3. In this Custom Setup screen, select the functions you want to install, then click [Next]. The functions in detail are shown below.



< Selecting the functions to install >

In this update file, you can select from the following functions.

■ Optional data

This update installs optional data which increases the brightness of taxi ways used in major airports.

Optional data can be set in either airports (Haneda, Fukuoka).

Note: If you are using FS2002, frame rate decreases promptly.

■ General vehicles (3D objects)

Installs 3D rendered general vehicles for major airports.

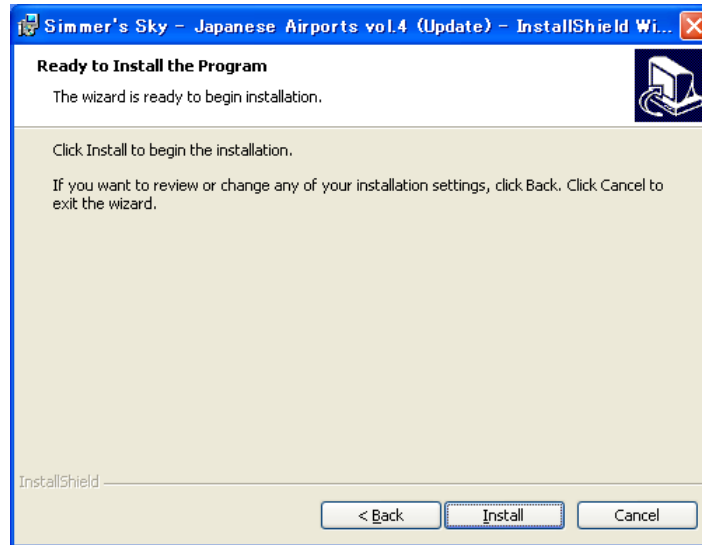
Same as Optional data, airports can be selected independently.

Note: After the installation, frame rate decreases promptly.

To specify each function to install, click the icon left to the item.

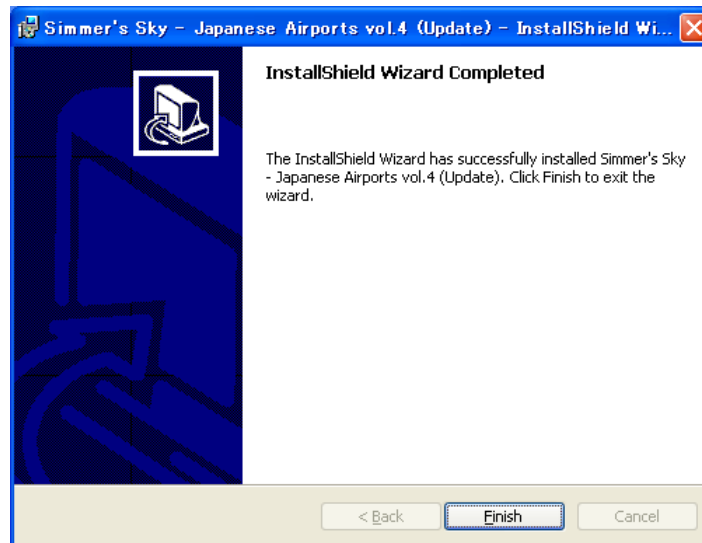
Install	[This feature will be installed on local hard drive.] [This feature, and all sub features, will be installed on local hard drive.]
Don't install	[× This feature will not be available.]

4. When a window below appears, click [Install].



5. The installation will take a while. Wait until it finishes.

6. If it is done, you will see a window below. Click [Finish], now the installation is complete.





7. When the update is successfully installed, launch "Setup Tool" and define the preferences.

< The usage of the "Setup Tool" >

There are 2 types of "Setup Tool" included; for 2004 and for 2002.

You can register or delete scenery files, and also register or restore AFCAD files.

"Setup Tool" can be launched from Start menu;

(Start - Programs - Simmer's Sky - Japanese Airports – JA4 Setup Tool)

■ Registering the scenery library (FS2004/FS2002):

1. Click "Register the scenery library" button.
2. When the check screen is displayed, click "yes" button.
3. Click "OK" button and Registration of scenery library is complete.

■ Registering the AFCAD file (FS2002):

1. Click "Register the AFCAD file" button.
2. On the airport selection screen, choose the desired airport and click "OK" button.
3. Please follow directions of a screen.



Uninstalling Japanese Airports

To uninstall Japanese Airports vol.4, first you need to uninstall the update programs described below before uninstalling the program.

- Simmer's Sky - Japanese Airports vol.4 (update) - uninstall first
- Simmer's Sky - Japanese Airports vol.4

1. Go to the Windows Start Menu. Open [Settings] - [Control Panel]. Double-Click on [Add/Remove Programs].

- If your Windows XP uses Luna as a desktop theme, [Start] - [Control Panel] - [Add/Remove Programs].

2. Select "Simmer's Sky – Japanese Airports vol.4 (update)" from the list and click [Remove] button.

If you are using Windows 98/Me, click [Add/Remove] button.

3. Then a confirmation dialogue will appear, click [OK] then the update program will be removed from your PC.

4. When it is complete, uninstall "Simmers's Sky - Japanese Airports vol.4" by following the procedure above.

Please note: Do not remove the software without using [Add/Remove Programs]!
The uninstall will result in mal function!

Last update: August 08, 2008